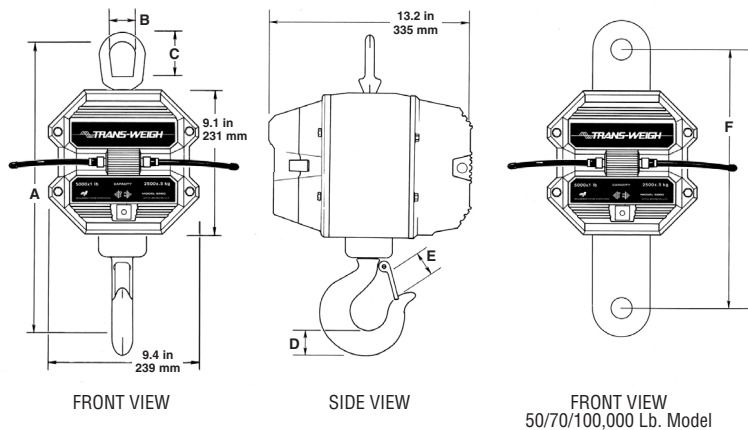


MSI-6260 Trans-Weigh Product Specifications

For self-contained, integral display and heavy duty requirements, see MSI-4260 Port-A-Weigh, MSI-4300 Porta-Weigh Plus and MSI-9300 Porta-Weigh Plus CellScale specification sheets.

For light duty requirements, see MSI-3360 Challenger 2 specification sheet.

- Contact factory for higher capacities
- CR = Crosby or equivalent
- * These dimensions also apply to 50/70/100,000 lb units with hook and shackle.
- ** Resolution subject to change for NIST approved units
- *** Ultimate overload: 490% of kg capacity
- **** Ultimate overload: 475% of lb capacity / 430% of kg capacity
- ***** Ultimate overload: 450% of kg capacity



CAPACITY	RESOLUTION**	A*	B*	C*	D*	E*	F	HOOK	EYE NUT OR SHACKLE	APPROX. SHIP WT.
500 lb	0.2 lb	18.3 in	2.25	3.06	1.44	1.41	-	5 ton alloy	CR # 7	53 lb
250 kg	0.1 kg	465 mm	57.1	77.7	37.0	36.0	-	swivel	eye nut	24 kg
2,000 lb	1 lb	18.3 in	2.25	3.06	1.44	1.41	-	5 ton alloy	CR # 7	53 lb
1,000 kg	0.5 kg	465 mm	57.1	77.7	37.0	36.0	-	swivel	eye nut	24 kg
5,000 lb	1 lb	20.5 in	2.50	3.50	1.81	1.69	-	7 ton alloy	CR # 8	62 lb
2,500 kg	0.5 kg	521 mm	64.0	89.0	46.0	42.9	-	swivel	eye nut	28 kg
10,000 lb	2 lb	20.5 in	2.50	3.50	1.81	1.69	-	7 ton alloy	CR # 8	62 lb
5,000 kg	1 kg	521 mm	64.0	89.0	46.0	42.9	-	swivel	eye nut	28 kg
20,000 lb	5 lb	28.5 in	4.00	6.25	2.62	2.41	-	15 ton alloy	CR # 11	105 lb
10,000 kg	2 kg	724 mm	101.6	159	66.5	61.2	-	swivel	eye nut	47 kg
30,000 lb	10 lb	30.0 in	4.00	6.25	3.00	3.19	-	22 ton alloy	CR # 11	125 lb
15,000 kg	5 kg	762 mm	101.6	159	76.2	81.0	-	swivel	eye nut	55 kg
50,000 lb	10 lb	41.0 in	5.00	6.00	3.62	3.63	15.0	30 ton alloy	CR 25 ton	235 lb
25,000 kg	5 kg	1041 mm	127	152	92.0	92.0	381	swivel ***	shackle # 2130	106 kg
70,000 lb	20 lb	43.2 in	5.00	6.00	4.56	3.75	15.0	37 ton alloy	CR 40 ton	270 lb
35,000 kg	10 kg	1097 mm	127	152	116	95.0	381	swivel ****	shackle # 2140	121 kg
100,000 lb	20 lb	52.1 in	5.75	6.65	5.06	4.25	16.25	CR 45 ton	CR 55 ton	420 lb
50,000 kg	10 kg	1324 mm	146	169	129	108	413	S1 swivel *****	shackle # 2140	189 kg

CONSULT FACTORY FOR HIGHER CAPACITIES – See MSI-9300HT Specification Sheet for high torque applications that require powered rotation of lifted material.

Standard System Specifications

Accuracy: Plus or minus 0.1% applied load

Update Rate:

0.4 second

Operating Temperature Range:

-4°F to +140°F / -20°C to +60°C

Operating Frequency:

49.86 MHz unlicensed user operation under Part 15 of F.C.C. Rules and Regulations. Weight data is frequency modulated and includes error detection for reliable data transmission in high EMI environments.

Operating Range:

300 ft. / 90m typical

Standard Indicator Features

Display: 7 digit 0.8 in. / 20 mm high LED, annunciator lamps for: motion, center of zero, auto zero maintenance, low battery, gross, net, tare and total

Power: 115 VAC, 50/60 Hz

Function Switches:

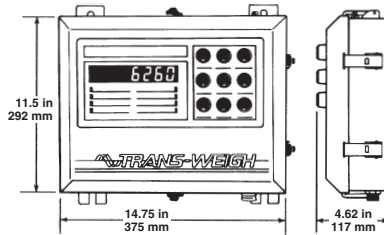
On/Off, Zero, Print, Tare, Display Tare, Clear Tare, Total, Display Total, Clear Total

Enclosure:

NEMA 4 / IP65, stainless steel

Data Output:

20 mA current loop



Standard Crane Unit Features

Enclosure: NEMA 4 / IP65, alodined cast aluminum

Power: 12 Volt lead acid rechargeable battery; 50 hours between charges (battery charger included)

Safe Overload:

200% of rated capacity

Ultimate Overload:

500% of rated capacity (except as noted above)

Hook: Timken swivel bearing, Crosby hook or equivalent

Top Eye Nut:

Crosby or equivalent on 500 through 30,000 pound capacities

Top Shackle:

Crosby or equivalent on 25, 35 and 50 ton capacities

Indicator Options

- Power: 12–250 VDC or 230 VAC
- Data Output: RS-232C or RS-423
- Multiple Operating Frequencies: Up to 5 within 1000 foot radius
- Licensed UHF frequency
- Internal battery

Crane Unit Options

- Substitute shackle for bottom swivel hook
- Oversized top lifting eye or shackle
- Remote load cell input and summing
- EMI shield (recommended for above magnet applications)
- Heat shield (high temperature applications - contact factory for specifications)
- Universal direct power supply; 85–265 VAC, 47–440Hz / 130–300 VDC
- NTEP approved versions (contact factory for specifications)



Certificate of Conformance
89-027

"We weigh quality first"

Measurement Systems International

14240 Interurban Avenue South STE.200
Seattle, Washington 98168-4661 U.S.A.
Phone: 206-433-0199 • Fax: 206-244-8470
Web: www.msiscscales.com • Email: info@msiscscales.com



Specifications subject to change without notice.
PUB.128-05-90E
© 2005 by Measurement Systems International, Inc.
Printed in U.S.A.